

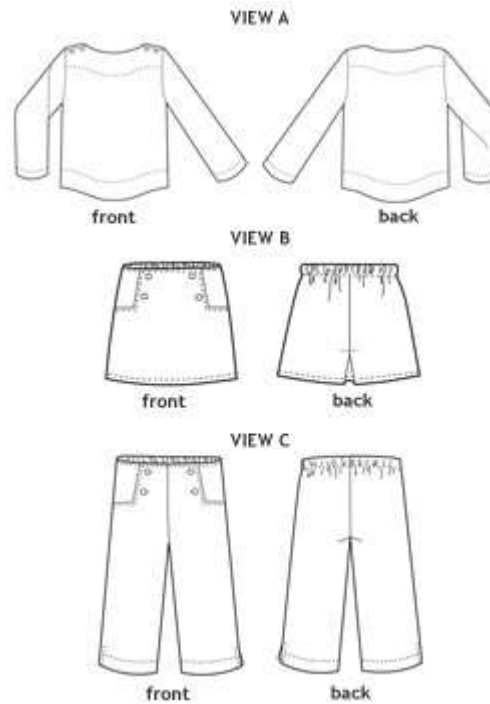
sailboat top, skirt & pants

Pull-on button-shoulder top has long sleeves, topstitched details, and curved shirt-tail hem. Sailor-style button-front cropped pants include side vents and elastic at the back waist. Matching A-line skirt also includes button front closure and back elastic.

SUGGESTED FABRICS: Light- to medium-weight woven fabrics like quilting cottons, broadcloth, canvas, corduroy, denim, poplin, and seersucker. Top can also be made in light- to medium-weight knits like jersey or interlock.

NOTIONS: pant + skirt - Thread, four 5/8" buttons, 1/2 yard of 3/4"-wide elastic, light-weight fusible interfacing.
top - Thread, four 3/8"-1/2" buttons, light-weight fusible interfacing.

DIFFICULTY: 



Fabric Guide (fabric width: 44" - 45")

SIZE	6-12M	12-18M	18-24M	2T	3T	4	5	6	7	8
Top	1 1/4 yards	1 1/4 yards	1 1/4 yards	1 1/4 yards	1 1/4 yards	1 1/3 yards	1 1/3 yards	1 1/2 yards	1 1/2 yards	1 1/2 yards
Skirt	2/3 yard	2/3 yard	3/4 yard	3/4 yard	7/8 yard	7/8 yard	1 yard	1 yard	1 yard	1 yard
Pants	2/3 yard	2/3 yard	3/4 yard	7/8 yard	1 yard	1 1/4 yards	1 1/4 yards	1 1/2 yards	1 1/2 yards	1 1/2 yards

Finished Measurements

size	6-12 M	12-18 m	18-24 m	2T	3T	4	5	6	7	8
Top, back length*	12 3/8"	13"	13 1/8"	13 5/8"	14"	14 7/8"	15 3/4"	16 5/8"	17 7/8"	18 3/4"
Chest, all around	22 1/4"	23"	23 3/4"	24"	25"	26"	27"	28"	29"	30"
Sleeve Length	10 3/4"	11"	11 1/4"	12 1/4"	12 3/4"	13 1/4"	13 3/4"	14 1/4"	14 7/8"	15 3/8"
Skirt Waist, extended	19 1/4"	20 1/4"	20 3/4"	21"	21 3/4"	22 1/2"	23 1/4"	24"	24 3/4"	25 1/2"
Skirt Length	7 1/2"	8"	8 1/2"	8 3/4"	9 1/2"	10 1/4"	11"	11 3/4"	12 3/4"	13 1/2"
Pant Waist, extended	20 3/4"	21 3/4"	22 1/4"	22 1/2"	23 1/4"	24"	24 3/4"	25 1/2"	26 1/4"	27"
Pant Length **	13"	14"	15"	15"	16 1/2"	18"	19 1/2"	21"	23"	24 1/2"

* from center back neck edge of garment

** outseam