

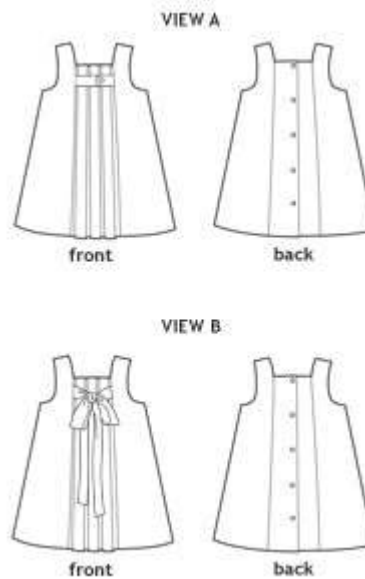
birthday party dress

Sleeveless A-line dress has three box pleats at center front with options for button tab (view A) or ties (view B). Buttons at back, and our signature hem facing.

SUGGESTED FABRICS: Light- to medium-weight woven fabrics like quilting cottons, broadcloth, silk dupioni, linen, poplin, and seersucker.

NOTIONS: Thread, one 1/2"-3/4" button (view A), optional 1 1/2 yards of 1"-wide ribbon (view B), five 3/8"-1/2" buttons, light-weight fusible interfacing.

DIFFICULTY: 



Fabric Guide, Views A + B

SIZE	6-12M	12-18M	18-24M	2T	3T	4	5	6	7	8
Dress Fabric, Main	1 yard	1 1/4 yards	1 1/4 yards	1 1/4 yards	1 1/3 yards	1 1/2 yards	1 1/2 yards	1 2/3 yards	2 yards	2 yards
Dress Trim, view A or view B with ribbons for ties	1/4 yard	1/4 yard	1/4 yard	1/4 yard	1/3 yard	1/3 yard	1/3 yard	1/3 yard	1/3 yard	1/3 yard
Dress Trim Fabric, view B with ties	1/2 yard	1/2 yard	1/2 yard	1/2 yard	2/3 yard	2/3 yard	2/3 yard	2/3 yard	2/3 yard	2/3 yard

Finished Measurements

SIZE	6-12M	12-18M	18-24M	2T	3T	4	5	6	7	8
Length *	16 3/4"	17 7/8"	19"	19 1/2"	21"	22 5/8"	24 1/4"	25 7/8"	28"	29 1/2"
Chest, all around (closed)	21 1/4"	22"	22 3/4"	23"	24"	25"	26"	27"	28"	29"

* from high point of shoulder

© Liesl Gibson 2007-2009