

jump rope dress

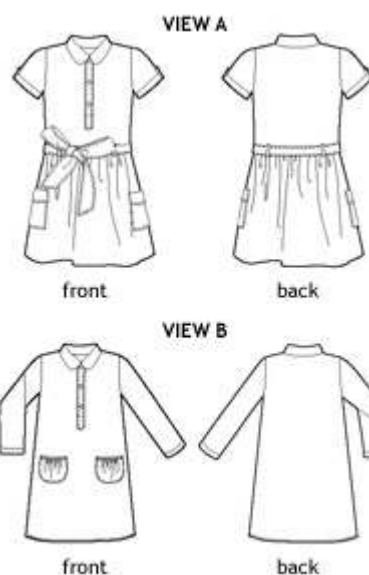


Girl's dress. Shirtwaist dress features rounded collar and front placket detail. View A includes short sleeves with folded cuff and sleeve tab, slightly dropped waist, patch pockets, and self sash with belt loops. View B features long-sleeves with folded cuffs, A-line shaping, and gathered bias-trimmed patch pockets.

SUGGESTED FABRICS: Light- to medium-weight woven fabrics like quilting cottons, broadcloth, lawn, shirtings, poplin, silk taffeta or dupioni, and linen.

NOTIONS: Thread, lightweight interfacing. VIEW A - Seven 3/8" - 1/2" buttons. VIEW B - Three 3/8" - 1/2" buttons.

DIFFICULTY:



Fabric Guide (fabric width: 44" - 45")

SIZE	6-12 M	12-18 M	18-24 M	2T	3T	4	5	6	7	8
Dress, view A	1 1/2 yards	1 1/2 yards	1 5/8 yards	1 3/4 yards	1 7/8 yards	2 yards	2 yards	2 1/8 yards	2 1/4 yards	2 1/4 yards
Dress, view B	1 1/4 yards	1 1/3 yards	1 1/2 yards	1 1/2 yards	1 1/2 yards	1 5/8 yards	1 3/4 yards	1 3/4 yards	1 7/8 yards	1 7/8 yards

Finished Measurements

SIZE	6-12 M	12-18 M	18-24 M	2T	3T	4	5	6	7	8
Chest, both views	20 1/2"	21 1/2"	22 1/2"	23 1/2"	24 1/2"	25 1/2"	26 1/2"	27 1/2"	29"	30 1/2"
Length*, view A	19"	20 1/4"	21 1/2"	22 1/2"	24"	25 1/2"	27"	28 1/2"	30"	31 3/4"
Short sleeve**, view A	7 1/2"	8"	8 1/2"	9"	9 1/2"	10"	10 1/2"	11"	11 1/2"	12"
Length*, view B	16 3/4"	18"	19"	20 1/4"	21 1/2"	23"	24 3/4"	26 1/4"	27 3/4"	29 1/4"
Long sleeve**, view B	14"	15"	16"	17"	18"	19"	20"	21"	22"	23"

* from high point of shoulder

** from center back

© Liesl and Co., Inc. 2009